

## • HPC Series Cable-Mount Faston Connectors

HPC Series cable-mount connectors are available as straight, right angle, or in-line.

### Models:

Model:	Description
HPCC4F	HPC Loudspeaker, Cable Mount Connector, straight cord plug
HPCC4FPKG	HPC Loudspeaker, Cable Mount Connector, straight cord plug, bulk pack
HPCC4RAF	HPC Loudspeaker, Right Angle Cable Mount Connector, right angle cord plug
HPCC4RAS	HPC Loudspeaker, Right Angle Cable Mount Connector
HPCC4S	HPC Loudspeaker, Cable Mount Connector
HPCI4F	HPC Loudspeaker, In-line Cable Mount Connector, in-line cord plug



## • HPCR Series Panel Faston Connectors

HPC Series round panel-mount connectors.

### Models:

Model:	Description
HPCPR410F	HPC Panel Mount Receptacle, Round, 0.093" Diameter Mounting Holes, 0.100" Flange Depth, 0.250" Faston Terminals
HPCPR41F1	HPC Panel Mount Receptacle, Round, 0.152" Diameter Countersunk Mounting Holes, 0.100" Flange Depth, 0.187" Faston Terminals
HPCPR42F	HPC Panel Mount Receptacle, Round, 0.152" Diameter Countersunk Mounting Holes, 0.200" Flange Depth, 0.250" Faston Terminals



## • TA Series Tini-QG Mini XLR-female

TA Series Tini-QG (Mini XLR) female cable-mount connectors.

Models:

Model:	Description
TA3FX	Tini-QG "Mini XLR" 3 Pin Female Cable-Mount, Silver Pins, Nickel
TA4FX	Tini-QG "Mini XLR" 4 Pin Female Cable-Mount, Silver Pins, Nickel
TA5FX	Tini-QG "Mini XLR" 5 Pin Female Cable-Mount, Silver Pins, Nickel



## • TA Series Tini-QG Mini XLR-male

TA Series Tini-QG (Mini XLR) male cable-mount connectors.

Models:

Model:	Description
TA3MX	Tini-QG "Mini XLR" 3 Pin Male Cable-Mount, Silver Pins, Nickel
TA4MX	Tini-QG "Mini XLR" 4 Pin Male Cable-Mount, Silver Pins, Nickel
TA5MX	Tini-QG "Mini XLR" 5 Pin Male Cable-Mount, Silver Pins, Nickel



## • TB Series Tini-QG Mini XLR-Panel Mount

TB Series male Tini-QG (Mini XLR) panel-mount connectors.

Models:

Model:	Description
TB3M	Tini-QG "Mini XLR", 3 Pin Male, circular Panel-Mount: Nickel Housing
TB4M	Tini-QG "Mini XLR", 4 Pin Male, circular Panel-Mount: Nickel Housing
TB5M	Tini-QG "Mini XLR", 5 Pin Male, circular Panel-Mount: Nickel Housing
TB6M	Tini-QG "Mini XLR", 6 Pin Male, circular Panel-Mount: Nickel Housing



## • TB Series Shielded Mini XLR Connectors

Shielded Tini-QG (Mini XLR) connectors provide the same great quality as the rest of the Tini-QG series with the added benefit of shielding from EMI and RF interference.

Models:

Model:	Description
TA3FSHF	Shielded Mini XLR, 3 contacts, Female, Silver Plated contacts, with Flex Relief
TA3MSHF	Shielded Mini XLR, 3 contacts, Male, Silver Plated contacts, with Flex Relief
TA4FSHF	Shielded Mini XLR, 4 contacts, Female, Silver Plated contacts, with Flex Relief
TA4FMSHF	Shielded Mini XLR, 4 contacts, Male, Silver Plated contacts, with Flex Relief



## • AAA Series 'QuickTwist' XLR Connectors

XLR connectors with two-piece assembly for quick termination and unequalled performance.

### Models:

Model:	Description
AAA3F	AAA Series 3 Pin XLR Female Cable Mount, Silver Pins, Nickel Metal
AAA3M	AAA Series 3 Pin XLR Male Cable Mount, Silver Pins, Nickel Metal
AAA3FP	AAA Series 3 Pin XLR Female Cable Mount, Silver Pins, Plastic Body (Silver Head)
AAA3MP	AAA Series 3 Pin XLR Male Cable Mount, Silver Pins, Plastic Body (Silver Head)
AAA4F	AAA Series 4 Pin XLR Female Cable Mount, Silver Pins, Nickel Metal
AAA4FP	AAA Series 4 Pin XLR Female Cable Mount, Silver Pins, Plastic Body (Silver Head)
AAA4M	AAA Series 4 Pin XLR Male Cable Mount, Silver Pins, Nickel Metal
AAA4MP	AAA Series 4 Pin XLR Male Cable Mount, Silver Pins, Plastic Body (Silver Head)
AAA5F	AAA Series 5 Pin XLR Female Cable Mount, Silver Pins, Nickel Metal
AAA5M	AAA Series 5 Pin XLR Male Cable Mount, Silver Pins, Nickel Metal
AAA7F	AAA Series 7 Pin XLR Female Cable Mount, Silver Pins, Nickel Metal
AAA7M	AAA Series 7 Pin XLR Male Cable Mount, Silver Pins, Nickel Metal



## • R Series Right-Angle Cable Mount XLR Connectors

Right-angle versions of AAA Series XLR Connectors.

### Models:

Model:	Description
R3F	AAA Series 3 Pin Female Right Angle Cable Mount XLR, Silver Pins, Nickel Body
R3M	AAA Series 3 Pin Male Right Angle Cable Mount XLR, Silver Pins, Nickel Body



## • E Series Panel-Mount XLR Connectors

The E Series offers a panel mount with quick release inserts. A small screwdriver can be used to remove the inserts, allowing for easy gender changes.

The male and female E Series fit into the same panel cut-outs.

### Models:

Model:	Description
E3F	E Series 3 Pin XLR Female Quick Disconnect (No Latch), Conical Spring Contacts, Silver Pins, Nickel Finish
E3M	E Series 3 Pin XLR Male Quick Disconnect (No Latch), Conical Spring Contacts, Silver Pins, Nickel Finish



## DMX Adaptors

Switchcraft introduces their new series of DMX adaptors. The DMX adaptors were developed for use in the theatre lighting industry.

The adaptors allow the end user to use standard 3 pin XLR cable assemblies in connecting DMX equipment.

The adaptors are available in 3 pin male to 5 pin female and 5 pin male to 3 pin female. All are wired "straight through".



### Models:

Model:	Description
S3F5M	3 pin female to 5 pin male
S5F3M	5 pin female to 3 pin male

### Features:

- Nickel-plated die-cast housing increases durability
- Pre-wired for immediate use
- Available in two configurations

### Applications:

- Theatre lighting
- Any DMX application

### Specifications:

Model:	DMX Adaptors
Shell	Die-cast zinc, satin nickel finish
Insert Insulation	Moulded thermoplastic
Socket Contacts	Silver-plated copper alloy, tarnish resistant
Pin Contacts	Silver-plated copper alloy, tarnish resistant

## • EH Series: AV Panel Mount Connectors

### 1. Choose any combination of EH Series connectors.

The EH Series by Switchcraft is a complete line of audio, video and data connectors built into standard panel-mount XLR housings.

Custom combinations of EH Series connectors can be quickly loaded into any of our Q-G Series panels. Once mounted, connecting your equipment to the back of an EH Series connector is fast and easy.

Most connectors are feedthru, which means standard cabling is simply plugged into the back of your gear, then plugged into the back of the EH Series connector. For those EH Series connectors that are not feedthru, solder lugs are clearly marked for simple, secure solder connections.

All EH Series connectors are available individually bagged with mounting screws.

### 2. Choose a blank Q-G Series panel.

Q-G Series panels come standard as 1U (1x16), 1.5U (1x16), or 2U (2x16). 1U and 1.5U versions allow for any combination of up to 16 EH Series connectors to be loaded into the panel. The 2U version can accommodate up to 32 EH Series connectors. Every Q-G Series panel includes quick change designation strips for easy connector identification.

### 3. Populate EH Series connectors into Q-G Series panel to create custom I/O solution for all of your audio, video and data connections.

Switchcraft's EH Series is the fastest and most versatile way to create a custom panel or wall plate perfectly suited to meet the needs of any studio, broadcast facility, or systems integrator. Customise your studio, make it easy to access your I/O's, and increase the lifespan of expensive pieces of equipment using EH Series connectors and Q-G Series Panels from Switchcraft.



#### Models:

Part Number	EH Series	Termination	Housing	Connector
EH35MMMSC	3.5MM (1/8") Mono	Solder	EH	35MMMSC
EH35MMSSC	3.5MM (1/8") Stereo	Solder	EH	35MMSSC
EHSVHS2	SVHS (S-Video)	Feedthru	EH	SVHS2
EH6MD2	PS/2	Feedthru	EH	6MD2
EHFW2	Firewire 400 (IEEE1394) Straight-wired	Feedthru	EH	FW2
EHFWX2	Firewire 400 (IEEE1394) Cross-wired	Feedthru	EH	FWX2
EHFW8002	Firewire 800 (IEEE1394B) Straight-wired	Feedthru	EH	FW8002
EHFW800X2	Firewire 800 (IEEE1394B) Cross-wired	Feedthru	EH	FW800X2
EHRCA2	RCA	Feedthru	EH	RCA2
EBNC2	BNC	Feedthru	EH	BNC2
EBNC2R	BNC (Recessed Front)	Feedthru	EH	BNC2R
EBNCSC	BNC	Solder	EH	BNCSC
EBNCRCA	BNC to RCA	Feedthru	EH	BNCRCA
EHRCA2BNC	RCA to BNC	Feedthru	EH	RCABNC
EHUSBAB	USB A to B	Feedthru	EH	USBAB
EHUSBBA	USB B to A	Feedthru	EH	USBBA
EHDB9MM	9-Pin DSUB Male to Male	Feedthru	EH	DB9MM
EHDB9MF	9-Pin DSUB Male to Female	Feedthru	EH	DB9MF
EHDB9FF	9-Pin DSUB Female to Female	Feedthru	EH	DB9FF
EHHD15MM	15-Pin HD DSUB Male to Male	Feedthru	EH	HD15MM
EHHD15MF	15-Pin HD DSUB Male to Female	Feedthru	EH	HD15MF
EHHD15FF	15-Pin HD DSUB Female to Female	Feedthru	EH	HD15FF
EHFF	F to F (Coaxial)	Feedthru	EH	FF
EHL2	LC Fiber Optic (single-mode)	Feedthru	EH	LC2
EHL2M	LC Fiber Optic (multi-mode)	Feedthru	EH	LC2M
EHSC2	SC Fiber Optic (single-mode)	Feedthru	EH	SC2
EHSC2M	SC Fiber Optic (multi-mode)	Feedthru	EH	SC2M
EHST2	ST Fiber Optic (single-mode)	Feedthru	EH	ST2
EHST2M	ST Fiber Optic (multi-mode)	Feedthru	EH	ST2M
EHTL2	TOSLINK	Feedthru	EH	TL2
EHRJ45 P5ES	Cat 5e Shielded	Feedthru	EH	RJ45 P5ES
EHRJ45 P5E	Cat 5e Unshielded	Feedthru	EH	RJ45 P5E
EHRJ45 P6S	Cat 6 Shielded	Feedthru	EH	RJ45 P6S
EHRJ45 P6	Cat 6 Unshielded	Feedthru	EH	RJ45 P6

• **EH Series: AV Panel-Mount Connectors**



E3MSCB



E3FSC



E4MSC



E4FSC



E5MSCB



E5FSC



E112BL



EH35MMSC



EHUSBBAB



EHUSBAB



EHFWX2B



EHF800X2



EH6MD2



EHSVHS2B



EHRCA2



EHDB9MF



EHDB9FFB



EHHD15MF



EHHD15FFB



EHFFB



EHBNC2B



EHL C2



EHL C2M



EHS C2



EHS C2M



EHST2



EHST2MB



EHTL2



ECPKG



ECP2PKG



ECP4PKG



ECP8PKG

• **Q-G® Panel Options**

Part Numbers	Rack Height	Number of Knockouts	Tapped 4–40 Holes
QGPK1B	1U	1 x 16	No
QGPK1B440	1U	1 x 16	Yes
QGPK2B	1.5U	1 x 16	No
QGPK2B440	1.5U	1 x 16	Yes
QGPK3B	2U	2 x 16	No
QGPK3B440	2U	2 x 16	Yes



## • Switchcraft Patchbays: MMVP Series Micro Video Patchbays

The MMVP Series provides the highest level of density for SMPTE 424M video and AES/EBU digital audio patching... 48 channels (96 patch-points) in a 1U 19" rack space.

Based on the patented, proven design of Switchcraft's MVJ MidSize video jack, the all metal, screw-in jack provides complete stability and durability in even the most extreme applications, including mobile production. The MMVP jack is rated at 3GHz and meets SMPTE 424M specifications. Industry standard DIN 1.0/2.3 rear termination makes installation easy and eliminates the need for proprietary connectors or special tooling.

Each patchbay jack can be colour-coded using our new colour chips. Each chip snaps into the front panel, providing instant channel identification. Additionally, snap-in posts on either side of the designation strips secure designation labeling.

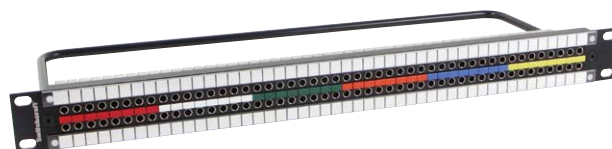
The MMVP Series is available in 1U and 2U heights for greater flexibility. 2U versions are available with two rows of jacks (4 x 48 density). All versions are available normalled, non-normalled, 75Ω terminated or non-terminated.

### Features:

- Based on the proven, reliable, patented technology of our MVJ Series of HD video jacks
- Screw in, all metal jack design withstands vibration in mobile applications
- Rated at 3GHz: meets SMPTE 424M specifications for HD patching

### • MMVP48K175T:

- 1U/96 Patch-points
- Fully Normalled
- 75Ω Terminated
- Designation strip height: 0.380"



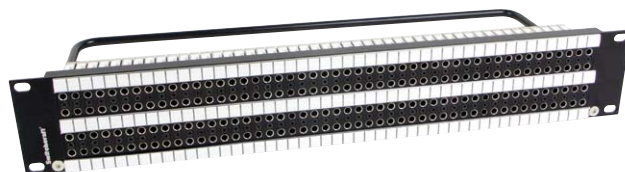
### • MMVP48K1NTAES:

- 1U/96 Patch-points
- Designed for AES/EBU Digital Audio
- Designation strip height: 0.380"



### • MMVP96K375T:

- 2U/192 Patch-points
- Fully Normalled
- 75Ω Terminated
- Designation strip height: 0.500"



### Patchbay Models:

Model:	Description
MMVP48K175T	1U, 2 x 48, Normalled, Terminated
MMVP48K1NT	1U, 2 x 48, Normalled, Non-Terminated
MMVP48K1N75T	1U, 2 x 48, Non-Normalled, Terminated
MMVP48K1NNT	1U, 2 x 48, Non-Normalled, Non-Terminated
MMVP48K375T	2U, 2 x 48, Normalled, Terminated
MMVP48K3NT	2U, 2 x 48, Normalled, Non-Terminated
MMVP48K3N75T	2U, 2 x 48, Non-Normalled, Terminated
MMVP48K3NNT	2U, 2 x 48, Non-Normalled, Non-Terminated
MMVP96K375T	2U, 4 x 48, Normalled, Terminated
MMVP96K3NT	2U, 4 x 48, Normalled, Non-Terminated
MMVP96K3N75T	2U, 4 x 48, Non-Normalled, Terminated
MMVP96K3NNT	2U, 4 x 48, Non-Normalled, Non-Terminated

Now available with channel marking colour chips - sold separately



### Colour Chip Models:

Model:	Description
K600	Bag of 60 MMVP Colour Chips, 10 of each colour
K6002D	Bag of 50 MMVP Colour Chips, Red
K6003B	Bag of 50 MMVP Colour Chips, Orange
K6004B	Bag of 50 MMVP Colour Chips, Yellow
K6005N	Bag of 50 MMVP Colour Chips, Green
K6006L	Bag of 50 MMVP Colour Chips, Blue
K6009B	Bag of 50 MMVP Colour Chips, White

## • Pass-Through I/O Panels

PT Series Audio Pass-Through I/O Panels are a perfect solution for anyone requiring front-of-rack access to their I/O's in any permanent or mobile studio environment.

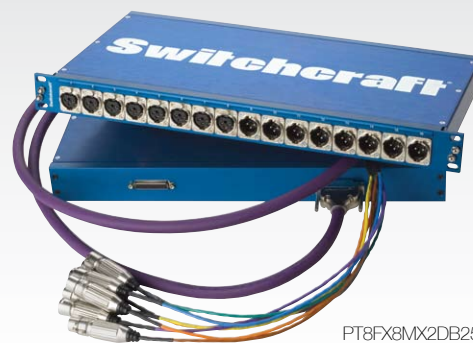
All versions are hard-wired to two DB25 back panel connectors utilising the TASCAM DTRS standard pin-out.

### Models:

Model:	Description
PT16FX2DB25	(16 Female XLRs)
PT16MX2DB25	(16 Male XLRs)
PT8FX8MX2DB25	(8 Female & 8 Male XLRs)
PTAESEBU2DB25	(8 Female & 8 Male XLRs in groups of four)
PT16TRS2DB25	(16 1/4" TRS Jacks)
*DB25 Breakout Cable	(DB25M10XLRMXLRF)

### Features:

- Front-of-rack access to the back of your rack
- Input/Output module for any piece of equipment utilizing DB25, 1/4" TS/TRS, or Male/Female XLR connections (i.e. audio consoles, mic-pre's, channel strips, outboard gear, etc.)
- Increase the lifespan of expensive pieces of equipment by preserving their input/output connectors insertion/withdrawal cycle limitations
- Hard-wired using 110Ω AES/EBU digital audio cable... ideal for analog or AES/EBU digital audio
- DB25 connectors are wired to the TASCAM DTRS pin-out
- All Switchcraft® Audio Pass-through Panels come with removable custom marking strips.



PT8FX8MX2DB25



• **Series 516: Rack & Panel Connectors**  
(Commercial Grade Rectangular)

- Industry standard rack & panel connectors with high reliability contacts
- Hermaphroditic contacts provide extremely reliable connection
- Gold over nickel contact plating in thru-hole PCB, wirewrap, crimp or wire hole styles
- Crimp contacts can be ordered separately in bulk or on reel for automated insertion (1800 per reel)
- Contacts may be ordered separately for pre-wired or select position assembly
- From 20 ~ 120 pins, with actuator, polarizing and locknut options
- Plastic and metal hoods available with cable clamps for strain relief

**Features:**

- UL Recognized
- 0.150 (3.81) Contact Spacing x 0.130 (3.30) or 0.150 (3.81) Row Spacing with Staggered Grid
- Plug and Receptacle available with 20, 38, 56, 90 or 120 contact sizes
- Edacon hermaphroditic contact mating design
- Contact termination options include: Crimp, P.C. Tail, Wire Hole, Wire Wrap, & Taper Tail
- Mating and unmating simplified with actuating screws
- Optional covers with side or top entry cable clamp in plastic or metal material available for all connector sizes
- Versatile metal cover design permits assembly or disassembly after cabling is complete plus cable entry style flexibility
- Actuating screws, locknuts, polarizing hardware, covers and contacts suitable for either plug or receptacle
- Polarizing hardware adjustable for 288 mating combinations
- Tools available for contact installation, removal, and crimping and polarizing changes



**Specifications:**

Model:	516 Series
Insulator Material	Diallyl Phthalate or Thermoplastic Polyester, UL 94V-0, Colour: Green, or Polycarbonate, Colour: Grey
Contact Material	Phosphor Bronze Alloy CA-510
Contact Plating	Gold over nickel for entire contact
Cover Material	Polycarbonate, Colour: Green, or Die-Cast Zinc, finished with grey enamel paint
Current Rating	8.5 A
Contact Resistance	10mΩ maximum
Dielectric Withstanding Voltage	2000v AC RMS at sea level
Insulation Resistance	5000MΩ minimum
Operating Temperature	-65 ~ +125°C
Insertion and Withdrawal Force	2 ~ 16oz (0.56 ~ 4.45N) per contact position