

clb-avid.

(plus CLB-BLUETOOTH Module)

cone2 
Modular AV Connectivity

Installation Guide



Before installation please take the time to read and understand the enclosed information.

What's included in the box?

- 1x CLB-AVID Amplifier
- 1x 24v DC 1.25A PSU
- 1x IR Remote Control Unit
- 1 x Reducing Module

www.cie-group.com 

A better way to buy AV.

CLB-AVID Description

The CLB-AVID Amplifier Module is a discreet 2 x 20W stereo amplifier for modular faceplate or dado conduit mounting.

Part of the Conec2 range of Modular Faceplates, the new CLB-AVID is an ideal solution for AV and single-room voice or sound reinforcement applications and can be integrated into a wide range of faceplate options and paired with any of the Conec2 connectivity modules.

The CLB-AVID features 2 x audio source inputs (3.5mm jack to the front and screw terminals to the rear). However, when paired with the CLB-Bluetooth Module (sold separately), the CLB-AVID stereo amplifier allows fast, simple wireless connection of Bluetooth-enabled devices such as smartphone, tablets, iPhones, iPods, iPads etc

The AVID2 compact amplifier is ideal for applications such as classrooms, boardrooms, meeting or demo rooms and domestic home installations.

Features:

- Stereo Amplifier Module (2 x 20W RMS output)
- For use with the Conec2 range of Faceplates and Connectivity Modules
- Optional CLB-Bluetooth Module provides Bluetooth connectivity for wireless audio input of iPhone, iPad, smartphones, etc
- 2 x Wired Input Sources: 3.5mm Stereo Jack and Wired Input Terminal (on rear PCB)
- Control of ON/OFF and volume via illuminated push button located on the front panel
- Infrared remote control of ON/OFF, volume and input channel selection (supplied as standard).
- Screw terminations on the rear of the unit for Loudspeakers, power and wired line input
- Includes In-line Power Supply

Introduction:

The depth of the CLB-AVID unit will allow installation into standard UK 2-gang EO boxes, with a minimum of 40mm depth.

These may be galvanised metal for installation in solid construction walls, plastic drylining (with lugs) or may be installed into surface mounting Dado-type trunking systems using the appropriate fixings.

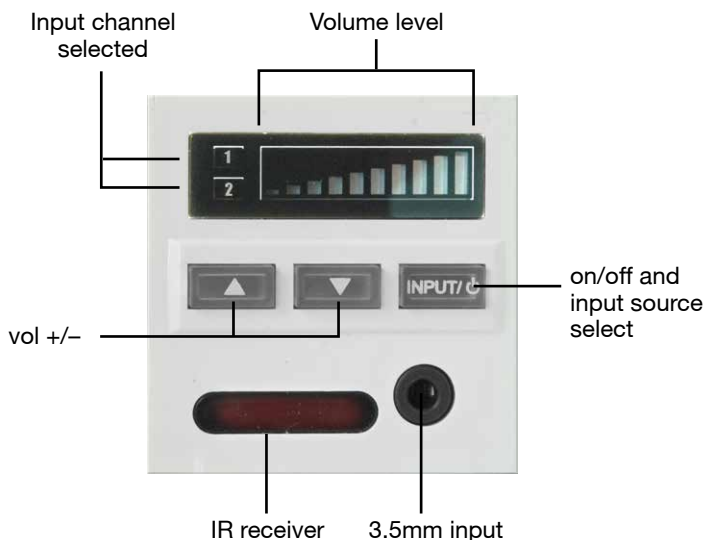
The CLB-AVID is designed to interface to the Conec2 series of faceplate solutions. As standard the CLB-AVID will fit into the faceplate models CLB460A, 460R, 860A and 860R using a reducing module CLB45-5045W (supplied with CLB-Avid).

Remember, if required, when planning your installation to provide room for the optional CLB-BLUETOOTH module, which requires a 25mm x 50mm space for installation adjacent to the CLB-AVID within the same faceplate shell (*CLB460A and CLB460R are not suitable if including Bluetooth Module*).

Specifications:

Output Power	2 x 20W @ 8Ω
Line Inputs	Stereo 3.5mm Jack Screw Terminal (Rear PCB.) Controlled by source button or IR Control
Bluetooth Input (optional extra)	CLB-Bluetooth Module
Line Output	Fixed level (Unbalanced) 1v 47kW
Frequency Response	40Hz ~ 20KHz
Input Sensitivity	1v
Power Requirements	24v DC, 1.25A
Dimensions	Faceplate PCB section
	45(W) x 45(H) x 40(D) mm 65(W) x 65(H) x 26(D) mm

Front Panel Controls and Connectivity:



Two types of wired input are provided: one via the front panel, a Stereo 3.5mm Jack and one via the 3 pin screw connector input on the rear of the amplifier module. The Stereo 3.5mm Jack Input has a signal-operated priority over the 3 pin screw connector.

3 illuminated buttons allow basic control of the CLB-AVID. The right hand button (⏻) controls the ON/OFF function and the selection of which input channel is used; the up/down buttons (▲▼) control Volume Up and Volume Down.

An LED Display shows the volume level via a 10 segment stepped LED and also indicates which input source is selected.

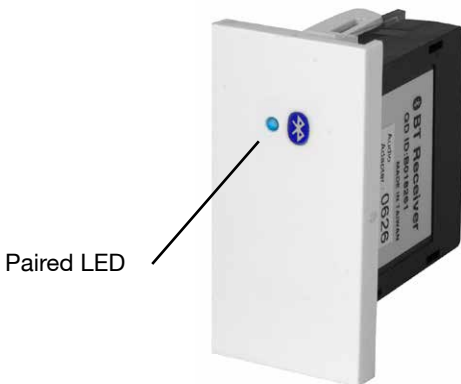
CLB-BLUETOOTH:

Wireless Bluetooth connectivity can be provided via a separate Receiver Module (CLB-BLUETOOTH sold separately) allowing any Bluetooth enabled device using A2DP profile to be paired with the CLB-AVID. A blue LED provides indication of the Bluetooth function.

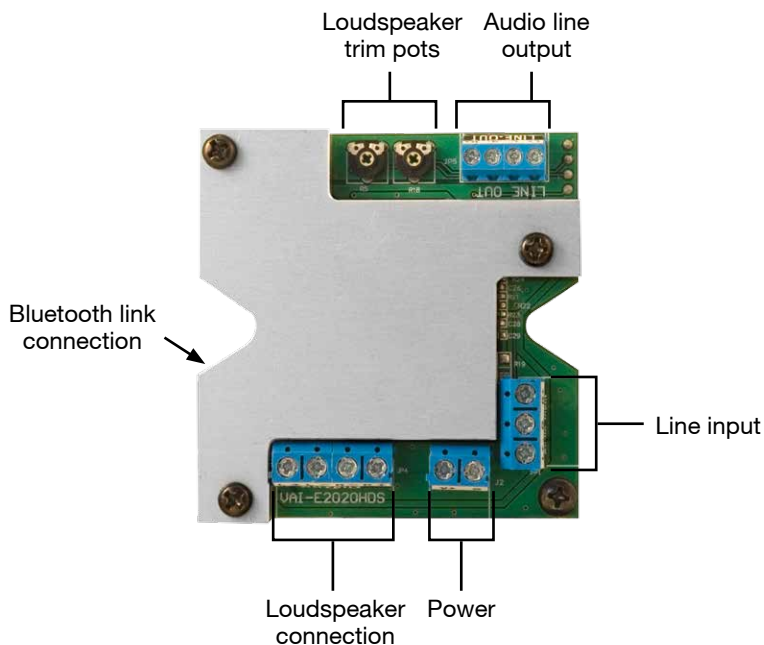
As follows:

Blink LED = Pairing Mode

Solid LED = Connected



Rear Panel Controls and Connectivity:



Screw terminal connections for Power, Wired Input, Loudspeaker Outputs and Line Level outputs are located on the rear PCB of the CLB-AVID.

Power is provided via the PSU (included); its cable being marked with a white line on the positive (+) core which connects to the V+ terminal, the plain black core is negative (-) which connects to the G terminal.

The Wired Input terminal is configured for a Stereo Input Signal; the three-way connector has terminals for L (Left Signal), G (Ground/Screen) and R (Right Signal).

Important Information.

It is important to note that if using the audio input located on the rear of the CLB-AVID that the signal applied is at full line level.

Low level signals such as headphone output levels can sometimes not provide enough output signal level to keep the internal priority switching circuit built into the CLB-AVID open, this may result in loss or intermittent playback of the audio being broadcast.

If you are experiencing any such problems please contact your reseller or the CIE-Group Technical Support Department on +44 (0)115 9770075

When using this application an appropriate screened cable is required to reduce the possibility of external signal interference.

Bluetooth Pairing Code: 2843

Please note that the Bluetooth Pairing Code is displayed on the rear of the Bluetooth Receiver. As this is not accessible post-installation, please ensure to note this down and advise the end user of the Bluetooth Pairing Code and/or where it can be found.

The Bluetooth Module is wired in parallel with the 3.5mm jack input on the front panel. Therefore in Bluetooth mode the audio source plugged into the 3.5mm jack should be switched off.

Loudspeakers should be wired to the L+ L- and R+ R- terminals, ensuring the phase of each loudspeaker is the same.

The line output is stereo and provides a fixed line output signal for feeding and external source such as a slave amplifier or induction loop system.

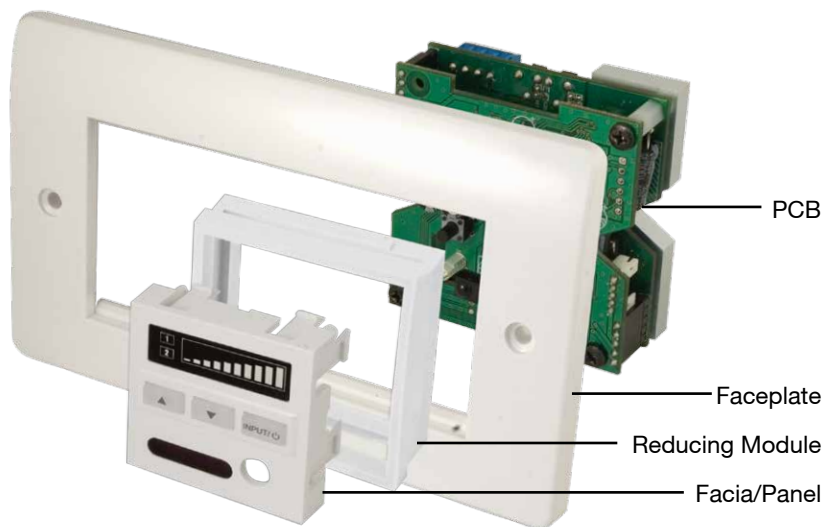


Note. The unit has been designed for an 8ohm load per channel; we do not recommend the use of loudspeakers with an impedance lower than 8ohms.

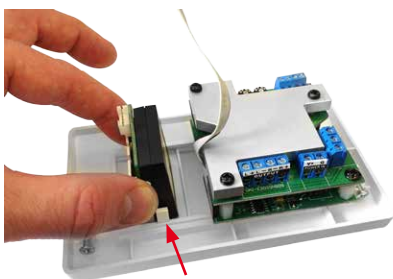
Putting the System together...

Once you have selected your faceplate option/style:

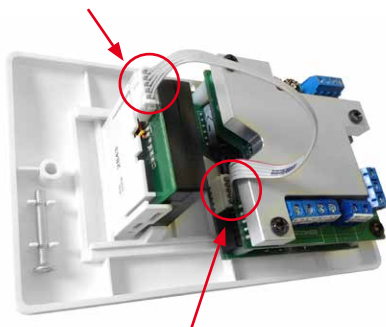
1. Insert the reducing module into the faceplate
2. Clip the front panel-facia of the CLB-AVID into the reducing module.
3. Carefully offer up the CLB-AVID PCB to the rear of the front panel-facia, being careful not to damage or break the PCB or compartments..



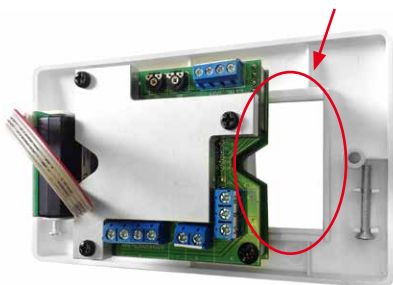
4. If chosen, insert the CLB-Bluetooth Module into the Faceplate, adjacent to the CLB-AVID.



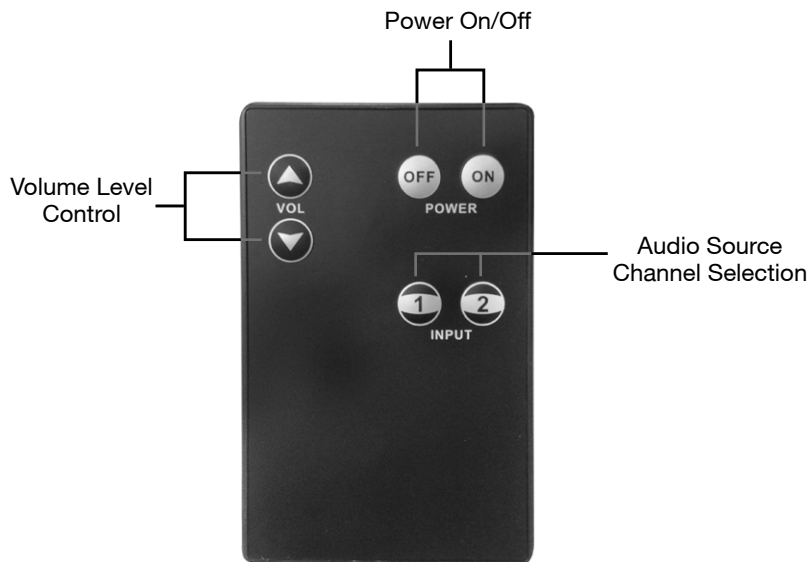
5. Connect the two Modules together with the connecting cable supplied with the CLB-Bluetooth Module.



6. An additional Conec2 AV Module of your choice (such as VGA, HDMI, etc) can be added into any spare Module spaces, or it can be filled with a blank Module (eg. Part Numbers CLB50-480-3MP or CLB50-480-12MP).



IR Remote Control Function:



Using the supplied IR Remote Control will provide wireless control of the CLB-AVID's volume level and Audio Source channel selection.



Conec2 'Pick-and-Click' Modular AV Faceplates



For details of the full range of Conec2
Modular AV Faceplate products,
visit us online today at...

www.cie-group.com 
A better way to buy AV.

www.cie-group.com 
A better way to buy AV.

CIE-Group Ltd Widdowson Close Blenheim Ind Est Bulwell Nottingham NG6 8WB England
T: +44(0)115 9770075 F: +44(0)115 9770081 E: info@cie-group.com W: www.cie-group.com

 [@ciegroup](https://twitter.com/ciegroup)  facebook.com/ciegroup  CIE-Group