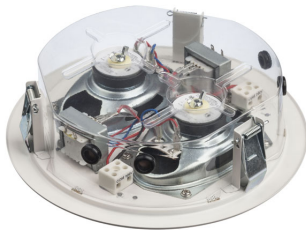




DL-E-AB 06-100/T-EN54 safe

- High sound pressure level
- Low mounting depth
- Quick mounting

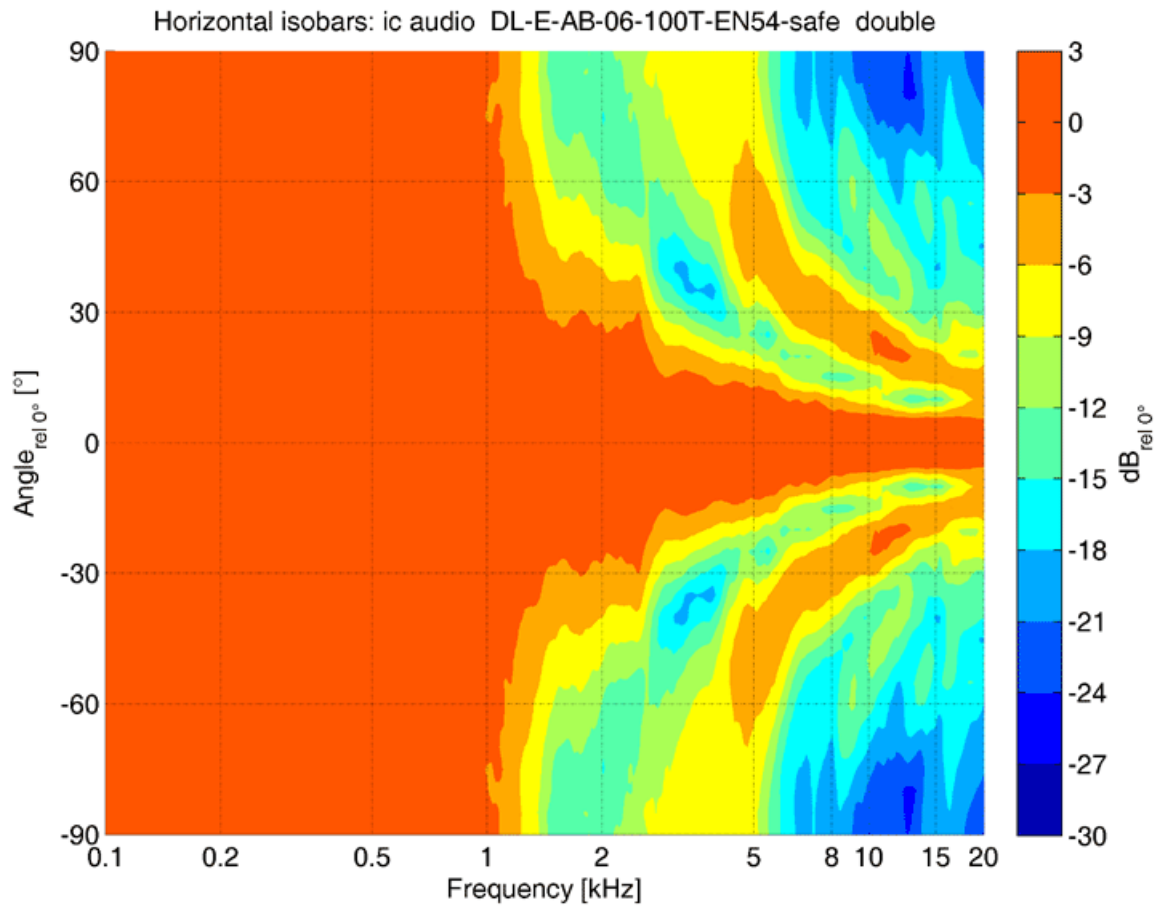


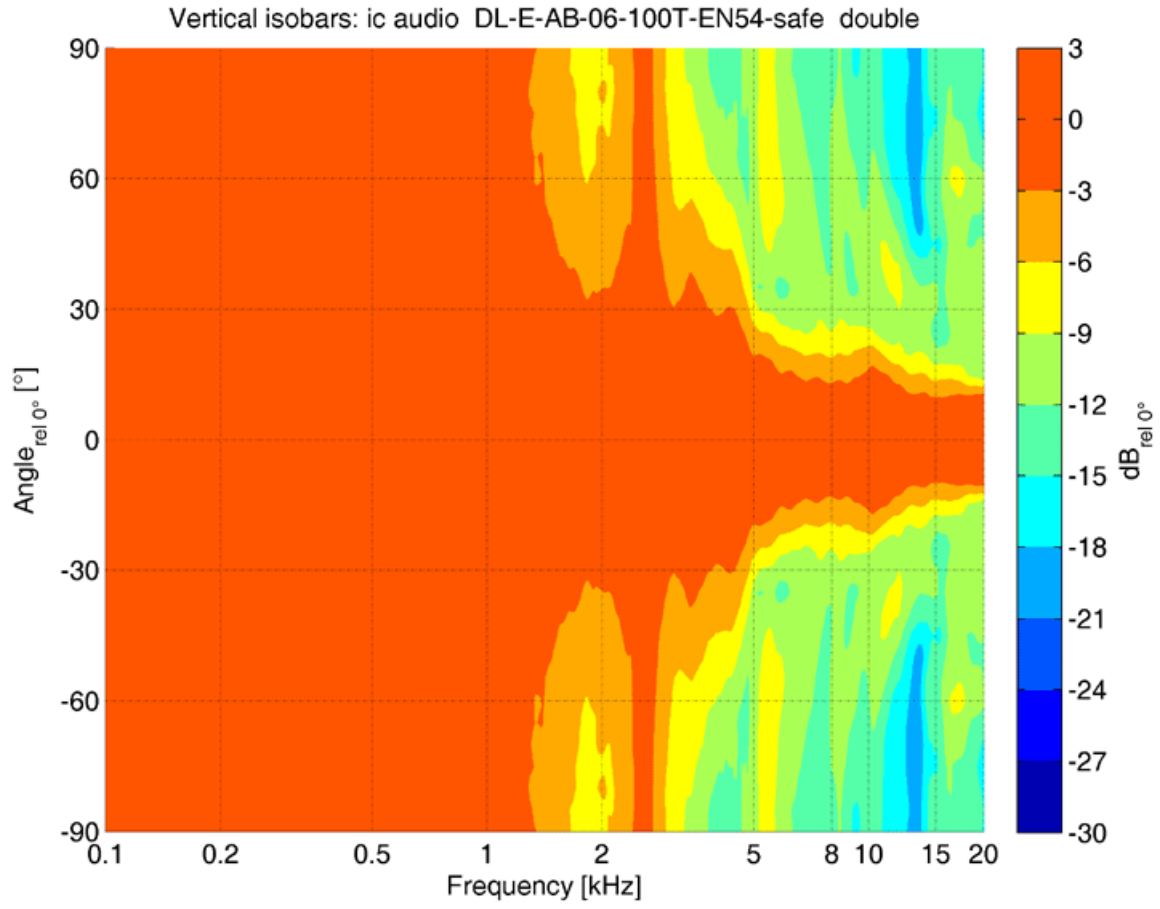
A/B-line ceiling speaker with high quality plastic contact protection for voice alarm applications, EN 54-24 certified, suitable for voice announcements and background music with excellent sound quality in buildings.

The 2x6W powered speaker is equipped with two full-range loudspeakers and two 100V transformer with 3 power adjustments, each. An extremely flat construction method allows a low mounting depth. For additional safety, ceramic blocks, thermal fuses are provided and the speaker chassis is impregnated against dampness. Protection class IP 21C secures the speaker against the impact of environmental influences.

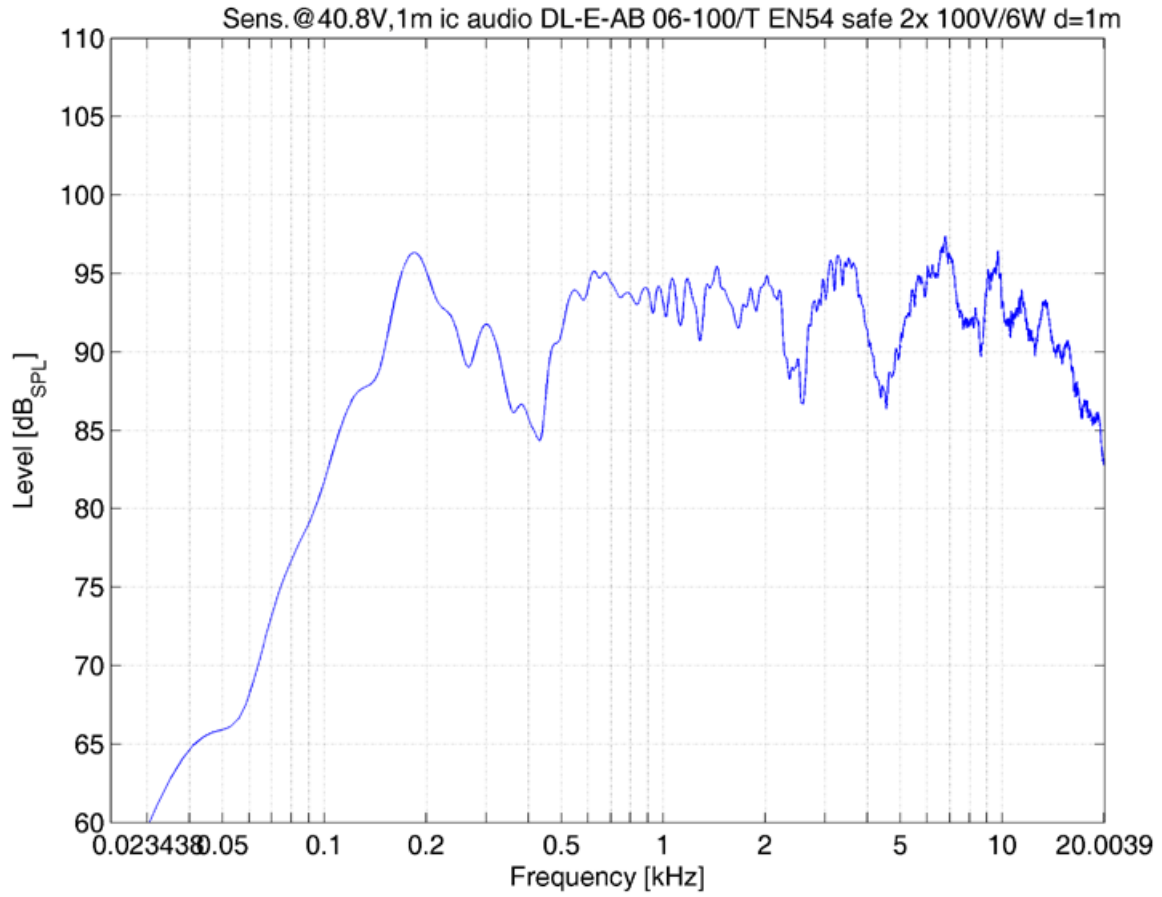
Quick and easy mounting with spring clamps and short tension distance. Perfectly suitable for installations where the installation depth is very limited. This speaker is suitable for a ceiling strength of 3 – 45 mm. Our specification is primarily related to solid ceilings, for ceilings with soft materials a higher ceiling thicknesses could be necessary. In addition, stronger cables and other fittings may also result in changes of the appropriate setup. With regard to the variety of materials and manufacturers, we recommend to build in a sample of the speaker to match the requirements accurately.

Polar Diagrams

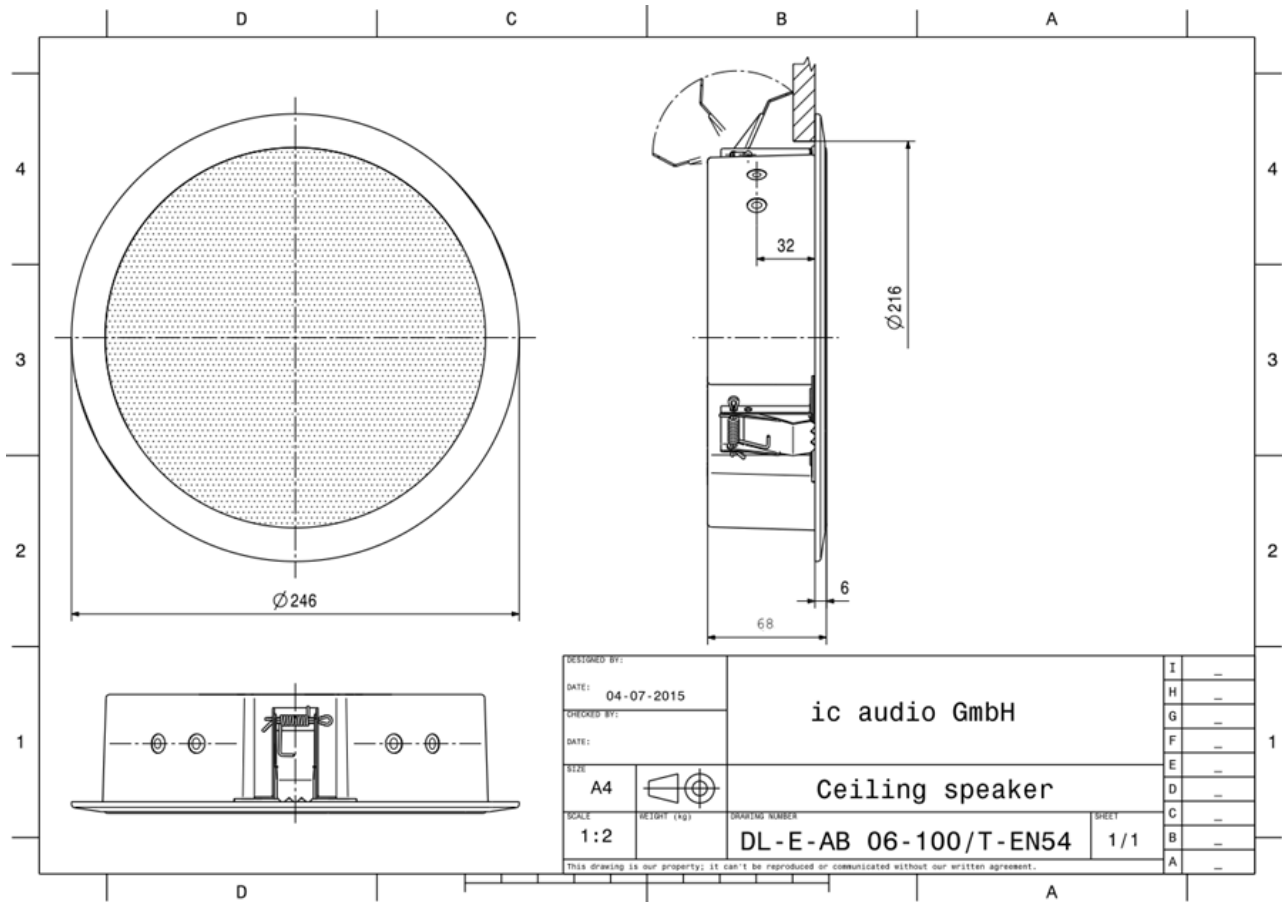




Frequency Response Diagrams



Technical Diagrams



Technical Data (Electrical)

Description	DL-E-AB 06-100/T-EN54 safe
Power	2x6/3/1,5 W
Impedance (100V)	2 x 1667/3333/6667 ohm
Frequency Range	103 - 20.100 Hz (single) 107 - 19.600 Hz (double)
Frequency Response	96 - 23.300 Hz (single) 101 - 22.900 Hz(double)
SPL 1W/1m, peak	88,0 dB (single) 94,0 dB (double)
SPL , 1W/4m, peak	76,0 dB (single) 82,0 dB (double)
SPL Pmax/4m, peak	83 dB (single) 89 dB (double)
SPL, rated noise power / 4m	83,0 dB (single) 88,0 dB (double)
Sensitivity EN54-24, 1W/4m	73,0 dB (single) 77,0 dB (double)
Sensitivity EN54-24, 1W/1m	85,0 dB (single) 89,0 dB (double)
Dispersion -6dB, 500Hz	single h/v 180° double h/v 180°
Dispersion -6dB, 1KHz	single h/v 180° double h/v 180°
Dispersion -6dB, 2KHz	single h/v 180° double h/v 77°/137°
Dispersion -6dB, 4KHz	single h/v 150°/100° double h/v 33°/90°

Technical Data (Mechanical)

Dimensions	246x66 mm
IP Rating	IP21
Weight (net)	1,10 kg
Ceiling Cut-out	218 mm
Temperature range	-10 / +55 °C
Mounting	spring clamp
Connector	2-pin ceramic block

Colour RAL 9016

Product Attributes



ic audio loudspeakers are tested and classified according to the IEC standard 60529 (degree of protection by enclosure) against the penetration of foreign objects and moisture. The classification is conforming to standards through characterization with a fixed code. This code consists of the letters IP (International Protection) followed by two digits. The first digit indicates the degree of protection against dust and the second digit the degree of protection against water. Please note that the testing of the products has been carried out in laboratory conditions which are not always 100% comparable with the conditions of different installation environments. This protection can be reduced due to normal wear and tear depending on the installation environment.

RoHS compliant (2011/65/EU)

The IP rating specified is based on ic audio test results, not on CNBOP-PIB test results. Certification only verifies the minimum requirements for EN54-24 compliance.



Design
Supply
Support

