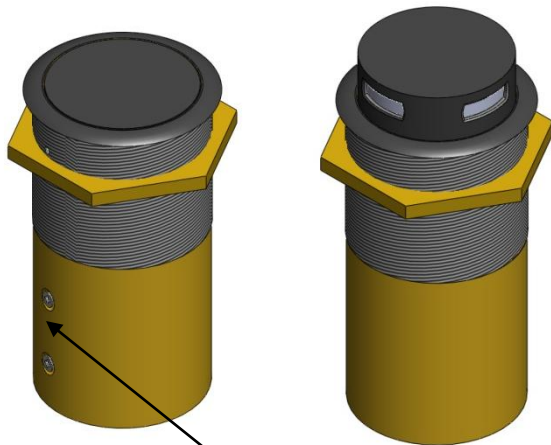


The CRM 202-RF is a dual boundary layer through table cardioid condenser microphone, with a built-in mechanism that will allow the user to make the microphone disappear without having to physically remove it from the table. This is achieved by simply pressing the top of the microphone downwards until it locks; then by pressing the microphone again it will raise itself back to its original position above the surface of the table. Engineered in high quality brass with built in shock mount and RF filter. Standard finish: Black Nextel or Satin Nickel.

- Offering 2 independently wired mics a + b
- Includes reed contact switch designed to be used for **remote switching**. Switch contact is closed (on) when mic is visible and open (off) once mic is retracted.
- Easy to install
- Low profile at surface level
- Unique ability to lock capsules away from sight when not in use
- Robust brass construction
- Cardioid polar pattern
- Built in RF filter
- Balanced output
- Supplied with 2 x 2m (6.6ft) 2 core + screen audio cable and 1 x grey 2 core cable for internal reed switch
- Satin Nickel (CRM 202N-RF) or Black Nextel (CRM 202-RF) finish



Mic a (white cable) in line with screws

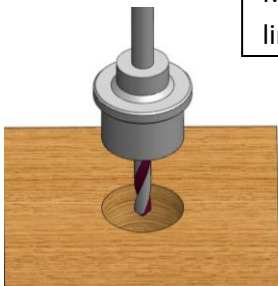


Fig A



Fig B

Installation guide

- 1) Drill a 58mm (2.25") hole through the table see fig A.
- 2) Remove the nut and fit the CRM 202-RF through the 58mm (2.25") hole see fig B.
- 3) Replace nut and tighten to the underside of the table see fig C.
- 4) Connections for each mic a + b will be identified: mic a (in line with screws has white sleeved cable), mic b has black sleeve and is 180deg from mic a: Red Phase +, White Phase - and screen Ground.

Grey 2 core (red and blue wires) is to be used for remote switching. Note switch is open circuit when the mic is down.

- 5) Ready to go; simply push down on the centre of the CRM 202-RF to raise the microphone. Reverse this action to lock down. See fig D.

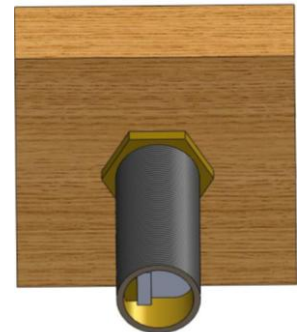


Fig C

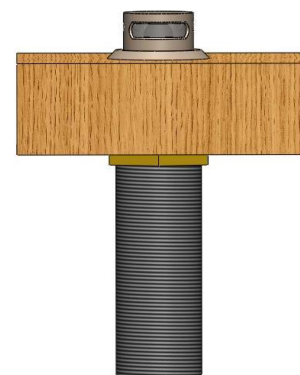


Fig D