

SPEAKERS for EXPOSURE TYPE

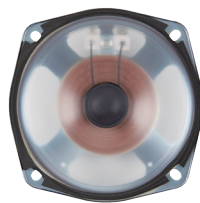


5" Exposure Ceiling Speaker

CS-503FE

interM

CS-503FE is an exposed Ceiling Speaker that can be installed on a ceiling or a wall that has no textured finish. Using V-0 grade flame retardant material suitable for international standards, it is possible to broadcast for a long time under an emergency such as fire.



Unit



Rear



Side

FEATURES

- **5" Full-range speaker**

- **Using High quality matching transformer (100V)**

- **Easy to installation**

It is possible to install on the wall surface without the need for a cut-out hole.

- **Water-resistant cone of the speaker**

CS-503FE adopts PP made water-resistant cone of the speaker that prevents the unit from corrosion. So, the speaker even maximizes its strength in high humidity environments.

- **V0 rated flame resistant material**

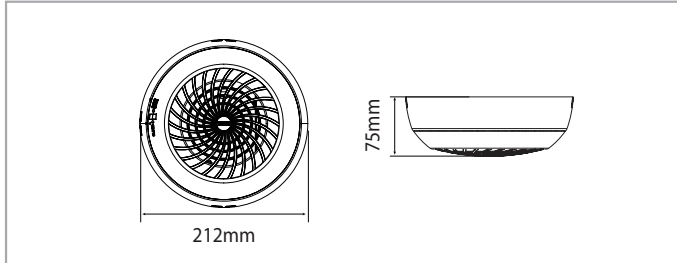
By made up of HIPS V0 rated flame resistant material, it is safe to conduct a long-hour operation even in emergency situations such as sudden disasters and fire.

- **How to install**

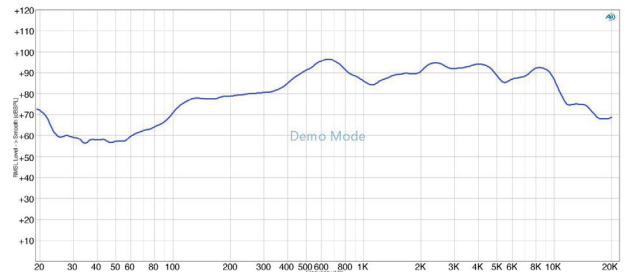
Refer to no.5 of the SPEAKER INSTALLATION GUIDE on pages 36-39.



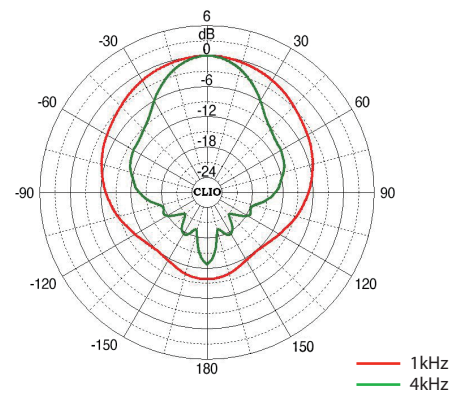
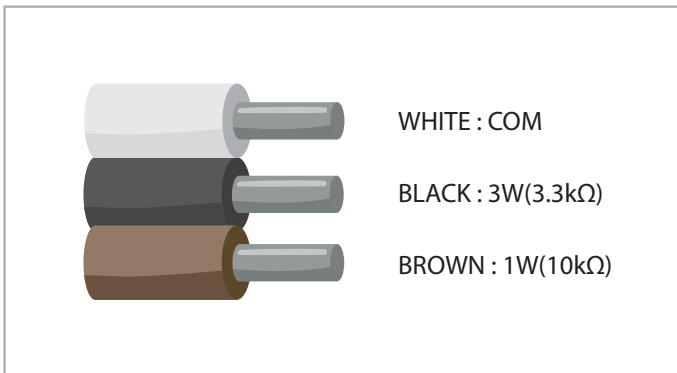
DIMENSION



FREQUENCY RANGE/POLAR PATTERN (1kHz/4kHz)



POWER SELECTION



SPECIFICATION

Model	CS-503FE	
Type	5" Exposure Ceiling Speaker	
Unit	5"	
Power Handling(AES)	3W	
Input Power	100V	3/1W
Impedance	100V	3.3k/10kΩ
Power Selection	By Wiring	
Frequency Range(-10dB)	200Hz ~ 11kHz	
Frequency Range(-20%)	100Hz ~ 15.5kHz	
Sensitivity (1W/1m, 1kHz)	89dB	
Maximum SPL[Cont]	94dB	
Nominal Dispersion (Conical)	1kHz	180°
	4kHz	60°
Input Connection	Bi-Wired	
Enclosure Material	HIPS (V0)	
Enclosure Color(Front)	White	
Grill Material	HIPS (V0)	
Grill Color	White	
Cut-Out Diameter(Ø, mm)	Ø210	
Weight (Net)	650g	
Dimensions (Ø(WxH)xD, mm)	Ø212 x 75	
Weather Resistant	-	
Flame resistant	O	
Certification	KS	
Included Accessories	-	