

• **Elma 2100X:** CAT IV Continuity and Voltage Tester with LCD Display

The new Elma 2100X is a unique, professional voltage tester with digital display.

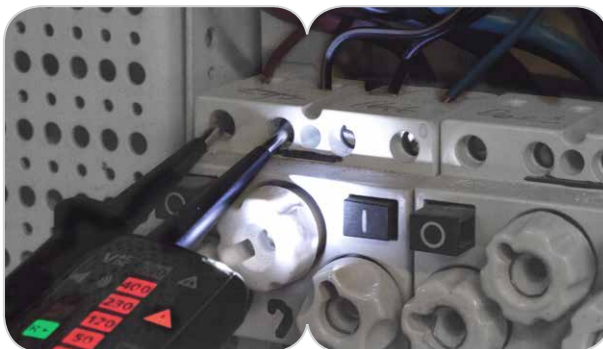
It has a range of clever features including long & highly flexible test leads, fast-attach 'click-on' test probe, changeable test tips (2 and 4mm) and integrated protective cover with storage sockets to prevent loss of test tips.

Designed to meet all of the new international safety standards IEC 61243-3 & IEC 61010-1 and is also GS38 compliant.

The Elma 2100X Voltage Tester provides voltage indication without batteries to prevent accidents or false indications. This pro-grade Voltage/Continuity/Phase Rotation Tester also features digital display, auto-select of function, ensuring correct operation at all times.

Features:

- Voltage test, 2 pole with LED (12-690v AC/DC)
- Voltage test on display (7-800v AC/DC)
- Voltage test, 1 pole, indicating phase
- Phase rotation test, 2 pole
- Continuity with LED and acoustic signal
- Automatic self test function
- Full voltage indication, even without batteries
- Automatic on/off function - no buttons
- Build in, bright white, LED flashlight
- Double insulation, IP65, GS approved CAT IV 600V



Specifications:

Model:	Elma 2100X
Voltage indication	12, 24, 50, 120, 230, 400 and 690v AC/DC
Test current	< 3.5mA
Voltage test 1 pole	100-690v AC
Continuity	0-400kohm
Phase rotation	2 pole, 200.. 690v 50/60Hz
Operating temperature	-15~-55°C
Safety	IEC 61010-1 CAT IV 600V / CAT III 1000V, IEC 61243-3 / 61010-031 / 61557-7, TUV/GS, double insulation
Protection	IP65
Test lead	Silicone
Battery	2x1, 5V LR03 (incl)
Dimensions	64(W) x 246(H) x 29(D)mm
Weight (Net)	0.19kg
Weight (Gross)	0.40kg