

• **MH50-100 : 50W High Power Music Horn Speaker 100v/Low Z**

The MH50-100 is a low cost, full-range 50W 2-Way Cabinet Speaker, providing clear voice paging and background music reproduction in noisy environments such as warehouses, factories or event hire applications.

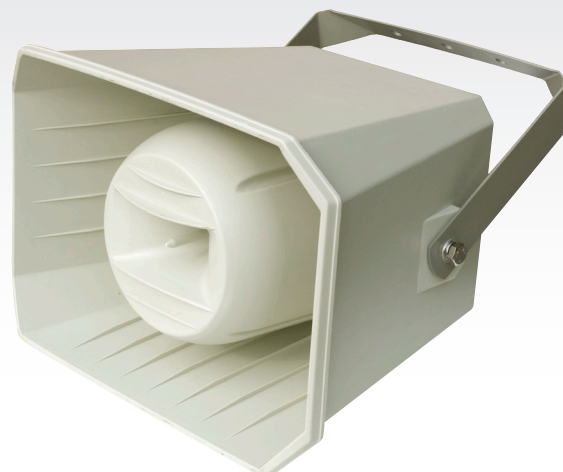
The MH50-100 horn speaker's IP66 rating protection allows for the speaker to be used in harsh environments (where dust and dirt ingress could normally cause problems, moist indoor environments (such as swimming pools, gyms, etc) and even outdoor applications (such as permanent install in car parks or temporary use in event hire applications).

Tappings are adjusted via a terminal block on the Horn Speaker's rear and a cable gland is provided for cable entry/access.

The MH50-100 Music Horn Speaker is supplied with a robust U-bracket allowing easy mounting and direction adjustment during installation.

Features:

- 50W High Power 2-Way Cabinet Speaker
- Full range loudspeaker driver
- IP66 rated for indoor and outdoor use
- 100v line and low impedance tappings
- Supplied with wall mount bracket
- High quality ABS plastic construction



Specifications:

Model:	MH50-100
Power	50W 100v
Tappings	50, 25, 12.5, 9, 4.5, 3.5W / Low Z 8Ω
Frequency Response	90Hz ~ 20KHz
SPL @ 1W/1m	97dB
IP Rating	IP66
Colour	RAL9013
Dimensions	370(H) x 270(W) x 305(D) mm
Net Weight	5kg