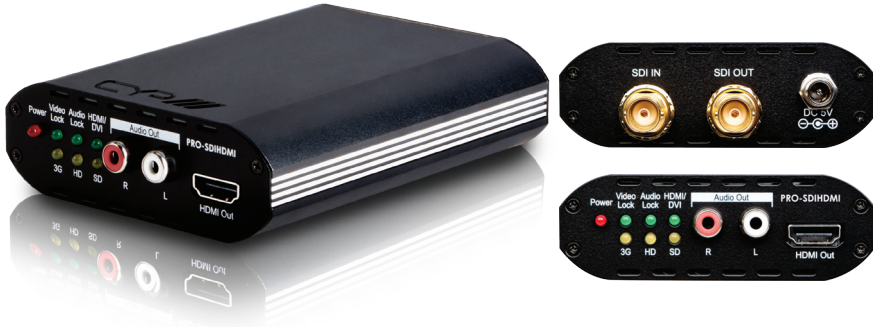


PRO-SDIHDMI

SDI to HDMI Converter with SDI Bypass



The PRO-SDIHDMI Converter accepts SD-SDI, HD-SDI, and 3G-SDI signals and converts to HDMI. The SDI input also has a bypass which is outputted simultaneously alongside the HDMI output allowing the SDI signal to be extended over distances up to 300m. This device also has the added benefit of an integrated audio de-embedder for sending 2-channel (L/R) audio to an AV amplifier.

FEATURES

- Operation at 2.970Gb/s, 2.970/1.001Gb/s, 1.485Gb/s, 1.485/1.001Gb/s and 270Mb/s
- Supports SMPTE 425M (Level A and Level B), SMPTE 424M, SMPTE 292M, SMPTE 259M-C
- Equalised and re-clocked loop output
- Integrated audio de-embedder for max 8 channels of 48kHz audio
- Auto video mode detection (3G/SD/HD)
- Conversion from SMPTE 425M level B to Level A for 1080p 50/59.94/60 4:2:2 10-bit
- Cascade multiple units for extending the signal longer distances
- Simultaneous display with SDI and HDMI signal
- Supports SDI signal distance up to 300M for SD signal, 200M for HD signal and 100M for 3G signal
- Frequency Bandwidth 225MHz/link (HDMI 1.3)
- Supplied with a Locking PSU



SPECIFICATIONS

Input:	1x BNC (1x SD-SDI / HD-SDI / 3G-SDI)
Output:	1x BNC (1x Loop SD-SDI / HD-SDI / 3G-SDI), 2x RCA (1x Analogue Stereo (L/R)), 1x HDMI (1x HDMI Uncompressed AV and Data)
Power:	5V/2.6A DC (US/EU standards, CE/FCC/UL certified)
Dimensions:	110mm (W) x 85mm (D) x 30mm (H)
Gross Weight:	640g
Net. Weight:	400g
Packaging:	Boxed

