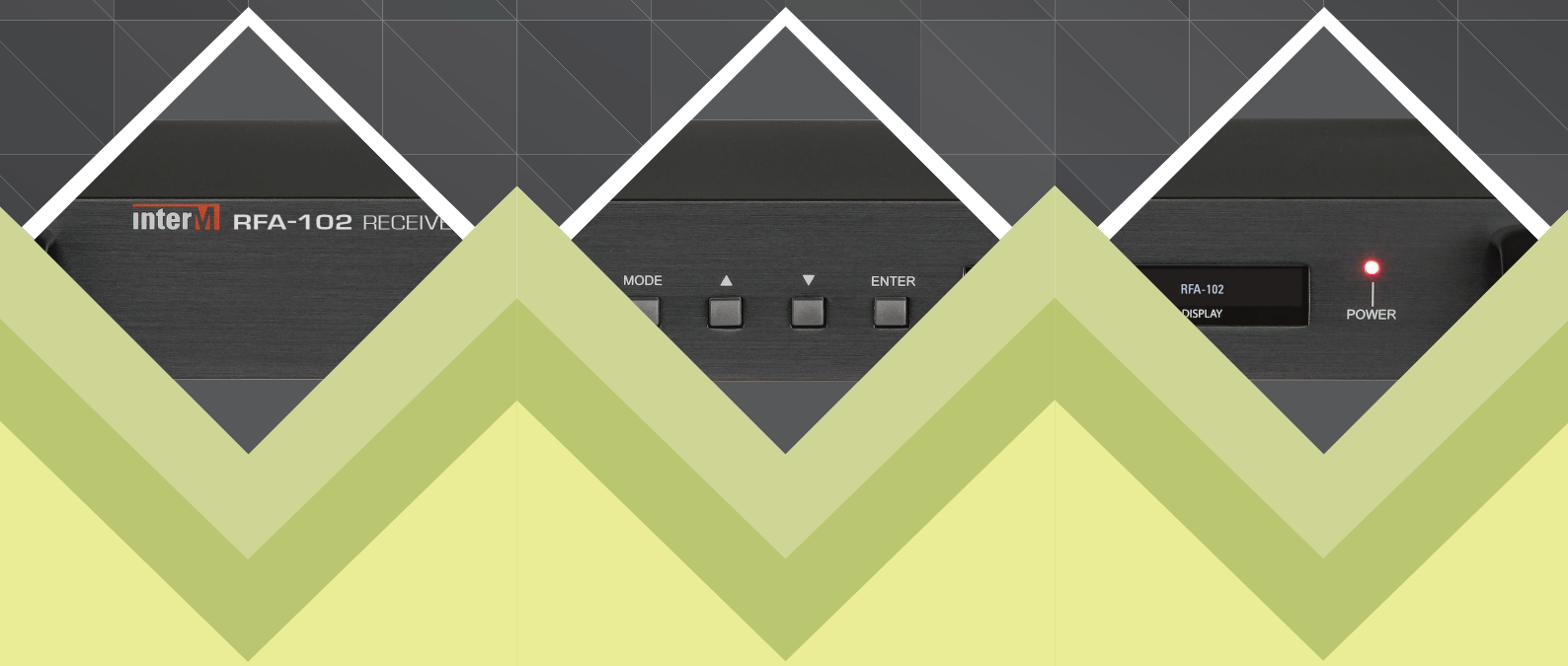


RECEIVER FOR AOE

# RFA-102





## Development Background

Previous Analog system was installed within limited distance.

As chronological change goes on, however, remote transmission solution using the network became essential. In order to meet customers' need of the era, Inter-M released a ETHERNET transmission solution that can send any audio and data regardless of the places if connected to the Internet.

RFA-102 lowered construction cost from the previous model of AOE-212N. RFA-102 is the transmission solution of AOE-212N that can build a dispersal type remote transmission solution at a reasonable price.

## FEATURES

- Audio Receiver of AOE-212N with exclusive
- 2 channels
- Unlimited transmission using LAN/Dedicated WAN network
- 1 channel with a point of transmission
- Compact 1U size
- System Monitoring by the web
- Hardware reset switch
- Easily detachable handle

## DATA SHEET

	RFA-102
Cable	UTP
Maximum Transmission Length	∞
Audio In/output	2 Channel Out
In/output of the Contact	1 Channel Output
Sampling Frequency	24bit, 48kHz
Others	Both LAN/WAN Possible to Use AOE-212N Exclusive Transmission Receiver

# RECEIVER FOR AOE

## Ethernet Transmission

RFA-102 supports transmission in LAN/WAN area using Ethernet. It can receive real-time analog audio from 2 channels that comes from AOE-212N. Transmitted to 1 channel, RFA-102 can run diverse system management in local regions.

※ The sound source is likely to be disturbed as WAN is easily environment-influenced. When used in Dedicated WAN, equipment checkup beforehand is required. Broadcasting in emergency situation must be used with LAN or exclusive network.

- LAN and Dedicated WAN using Ethernet network
  - Both LAN and Dedicated WAN can be used
  - Uncompressed compress system (Constant bandwidth is maintained)
- Multicast : 1 AOE : 70 RFA  
Unicast : 1 AOE : 20 RFA



## Professional Audio

Long-distance digital transmission of balanced analogue audio signal without electro-magnetic interference, signal loss or distortion.  
High quality uncompressed or compressed 24bit digital audio at 48kHz transmission over TCP/IP network with a THD less than 0.1.

## Front / Rear Panel



1 MODE BUTTON

4 OLED DISPLAY

2 ▲ / ▼ BUTTON

5 POWER LED

3 ENTER BUTTON



1 REMOTE OUTPUT

5 DC TERMINAL

2 EURO TERMINAL AUDIO OUTPUT(STEREO L R)

6 ETHERNET PORT

3 RCA AUDIO OUTPUT

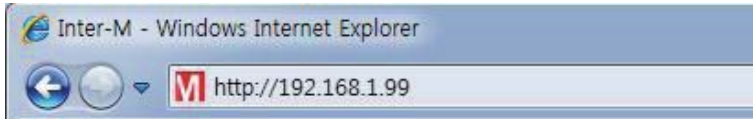
7 RESET SWITCH

4 SERVICE PORT

8 AC INLET

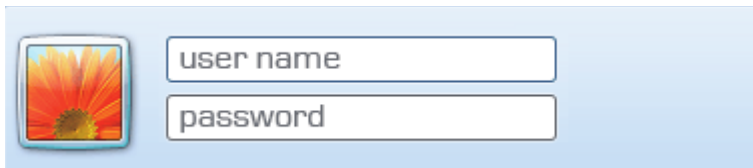
## Web GUI Access

Insert the IP(192.168.1.99 address) of RFA-102 on the address bar.



Insert the initial value to log in.

- USER NAME : admin
- PASSWORD : 1

A screenshot of a login form. On the left is a square icon with a sunflower. To the right are two input fields: the top one is labeled "user name" and the bottom one is labeled "password".

Insert the initial value to log in.

Connect to WEB GUI of RFA-102 and change the IP address then press APPLY button.

※To avoid crashing among the equipment, it is recommended to use different IP address not the initial value 192.168.1.99.



## APPLICATION



- Factory Facility
  - Integrated broadcasting for the grand scale factories



- Commercial Facility
  - Broadcasting in bloc



- Business Facility
  - Head/branch office
  - Distributed system



- Educational Facility
  - Integrated broadcasting in many buildings of the university



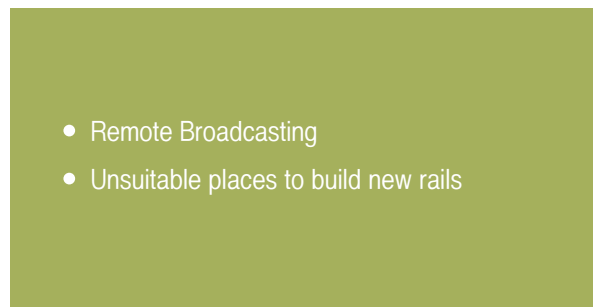
- Military Facility
  - Integrated broadcasting for the team and solidarity



- Leisure Facility
  - Grand scale leisure facilities such as ski resort and golf club



- Public Office
  - Broadcasting from central offices to branches

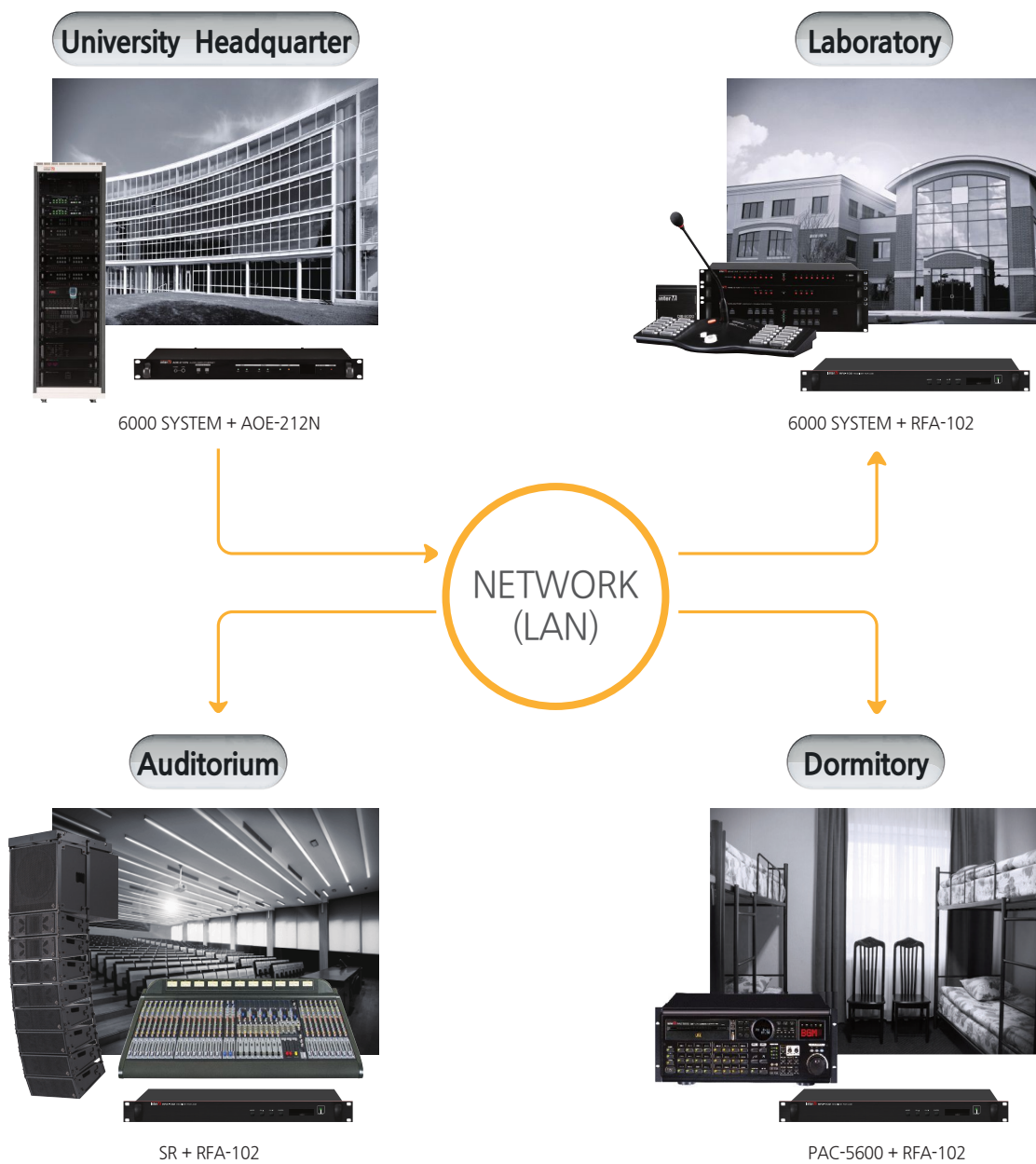


- Remote Broadcasting
- Unsuitable places to build new rails

# RECEIVER FOR AOE

## APPLICATION(SCHOOL) | LAN

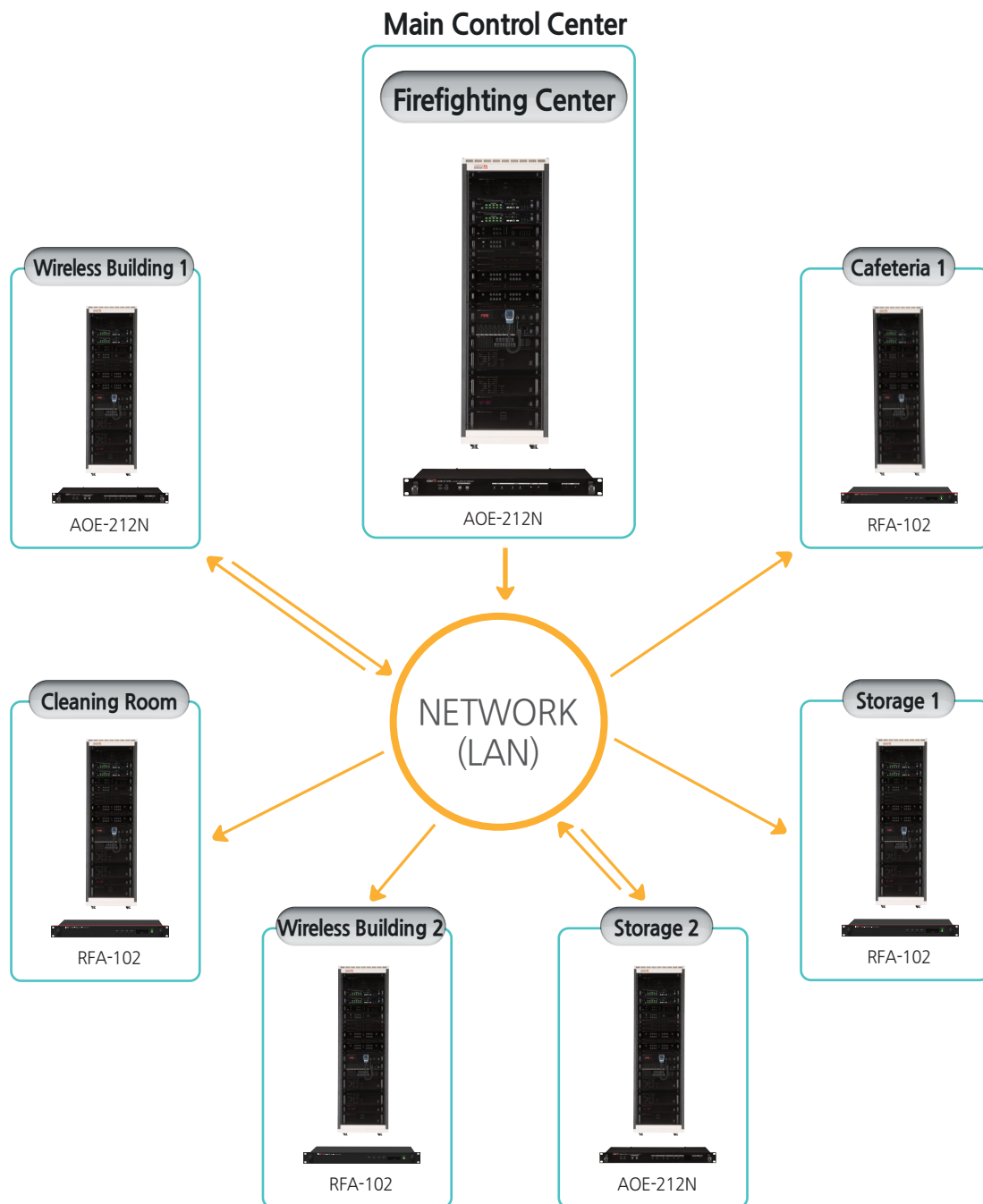
Universities are in need of delivering information from university headquarters to laboratories, auditoriums, dormitories, and annexes. With AOE-212N and RFA-102, integrated broadcasting is easily available.



## APPLICATION(FACTORY) | LAN

Factories have numerous branches in different regions.

The product sends and receives signals through LAN to broadcast in every places.



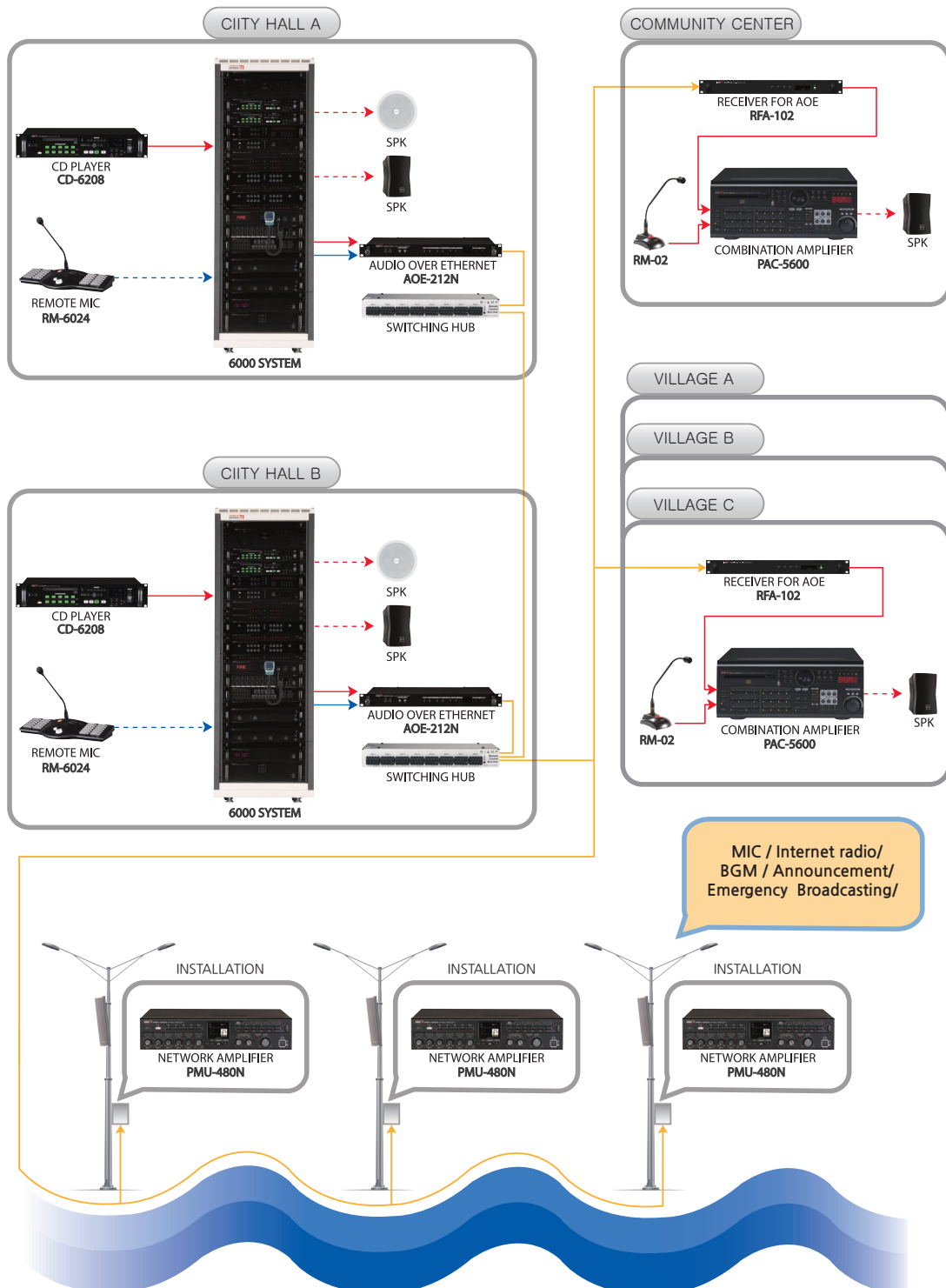


# RECEIVER FOR AOE

## APPLICATION(unified broadcasting within the region)

It delivers BGM, vocal broadcasting, and emergency broadcasting etc. from the City Hall or District Office to the Network through AOE-212N.

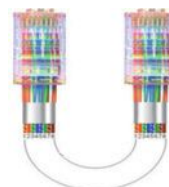
Installed AOE exclusive transmission equipment RFA-102 can go on air with delivered media even for the ones installed PMU-N near water.



## RECOMMENDED NETWORK TYPE

Type	Area	Single Mode Dedicated Fiber	Fiber Media Networking	UTP	WI-FI	PLC	POE	xDSL	Coaxial Modern
Product									
AOE-212N	LAN Dedicated WAN		○	○			○		
RFA-102			○	○			○		
PMU-N			○	○			○		

### Used for UTP



**Within only 100M**

- \* **Installation within 100M**
  - Use one L2 Switch to Operate
- \* **Installation over 100M**
  - Use L2 Switch to operate
  - Length Extension using Fiber Media Converter

## SPECIFICATIONS

THD(@0 dBFS, 1 kHz)		Less than 0.1%
S/N(@0 dBFS, 1 kHz)		Better than 70 dB
Output Level (@0 dBFS, 1 kHz)	XLR	16±3 dBV
	RCA	16±3 dBV
ETHERNET(LAN)		10/100 Base-T
Operation Temperature		-10°C ~ +40°C
Power Source		AC 220-240 V, 50/60 Hz, DC 24 V
Power Consumption		8.5 W
Weight(Set)		3.1 kg/6.8 lbs.
Dimensions (W x H x D) (Set)		482 x 44 x 280 mm / 19 x 1.7 x 11 in

Digital Network Transmission Equipment of Inter-M transmits audio and data through the network. If a different packet of the network is used instead of the exclusive data used for the equipment, it may lose the bandwidth. So, it is highly recommended to use a over 100M private network due to expected long network load and lose of the signal after being used for the business use and with network CCTV.

# ***RECEIVER FOR AOE***



**Inter-M Corp. (IMK)**

719, Dobong-ro, Dobong-gu, Seoul, Korea  
Overseas Sales Team

**Tel\_** +82-2-2289-8141~7    **Fax\_** +82-2-2289-8149    **E-mail\_** overseas@inter-m.com

**www.inter-m.com**

※ Design and specification are subject to be changed for the improvement of product quality without pre notice.

2015. 10. V4