



SAFR SC800 SCAN Facial Recognition Dome Camera

SAFR SCAN brings NIST-leading live video face recognition and video analytics features to the edge. Embedded directly into the camera, SAFR utilizes onboard compute functionality — eliminating the need for servers dedicated to processing video streams.

By eliminating server hardware, SAFR SCAN saves you on average \$500 per camera in on-premises server hardware. Leverage powerful video analytics capabilities, in real-time with dramatic reductions in total cost of ownership.

Facial Recognition at the Edge



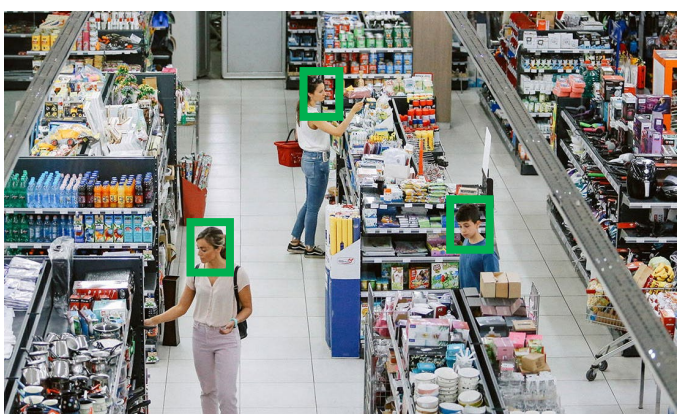
Facial Recognition
99.9% recognition accuracy per NIST



Live Video
The best solution for live video applications



Watchlist
Automated identification of persons of interest



Greater intelligence, lower TCO

- Perform key processing tasks on-camera
- Reduce network bandwidth and eliminate server hardware demands
- Real-time face recognition and video analytics is now more affordable whether you deploy on one camera or hundreds

SAFR SCAN Specifications

Biometrics	
FAR (1:1 / 1:N)	Up to 0.0001%
Capacity	Up to 50,000 Users
Match Speed	3 Images per Second
Operational Distance	Up to 55 Feet
Computer Vision	
Security	Surveillance Watchlist / Person of Interest
	Face Match and Face Search
Marketing	Age / Gender / Sentiment
Healthcare	Mask Detection
	Detection with Mask
General Electrical	
Power	PoE IEEE 802.3af Class3, DC12V
Power Consumption	DC Max 13.1W PoE Max 15.0W
Compliance	
Certifications/Directives	FCC, CE, ROHS
Electromagnetic Immunity	CE (pending)
Security	IEC 62599-1, IEC62599-2
Safety	UL 294, UL 62368-1 Ed. 3 (outdoor) (pending)
Environmental	IP65
Vandal rating	IK08
Electromagnetic Emissions	FCC
Mechanical	
Dimensions	52" x 52" (130 x 130 cm)
Housing	Outdoor Dome
Color	White
Material	Aluminum Die Casting
Weight	3.2 lbs (1.42 kg)
Light Source	IR LEDs
Environmental	
Operating Temp	-40C to +60C
Humidity	10% to 90% (non-condensing)
Storage Temp	-40F (-40C) to +140F (60C)
Vandal	IK10

IP Rating	IP67
Certifications	FCC, CE, RoHS
Network	
Ethernet	RJ45(1000Base-T(1Gbps))
Protocols	TCP/IP UDP AutoIP RTP(UDP/TCP) RTSP NTP HTTP HTTPS SSL DNS DHCP ICMP SNMPv1/v2/v3(MIB-2)
Security	HTTPS(SSL) IP filtering 802.1x
Video Output	RTSP
Video	
Image Sensor	1 /2.8" CMOS
Max Resolution	3840(H) x 2160(V)
Min. Illumination	Color: 0.12 Lux BW: 0 Lux IR Sensitive
Signal/Noise Ratio	50dB
Scanning	Progressive Scan
Compression	H.264 H.265 MJPEG
Streaming	Triple Streaming (3rd Only MJPEG)
Bitrate	100Kbps~25Mbps
Events	
Audio In / Out	Mic / 1 Line
Alarm In / Out	1 Line / 1 Line
Lens	
Focal Length	6-22mm
Aperture	F1.6
Lens Type	Motorized, Varifocal
IRIS Type	P-Iris Enabled
Zoom	3.7x Optical
Image	
Shutter Speed	Auto / Manual (1/15 ~ 1/32000) Anti-Flicker Slow Shutter (1/2,1/3,1/5,1/6,1/7.5, 1/10)
Auto Gain Control	Auto
Day/Night	True Day/Night
Digital Noise Reduction	3D DNR
Wide Dynamic Range	Up to 120dB
IR LED	100ft (30m)
Privacy Zone	Yes
Function	Motion Detection, Mirror and Flip

Preliminary Datasheet